

# R Commander Installation

by

何宗武 教授

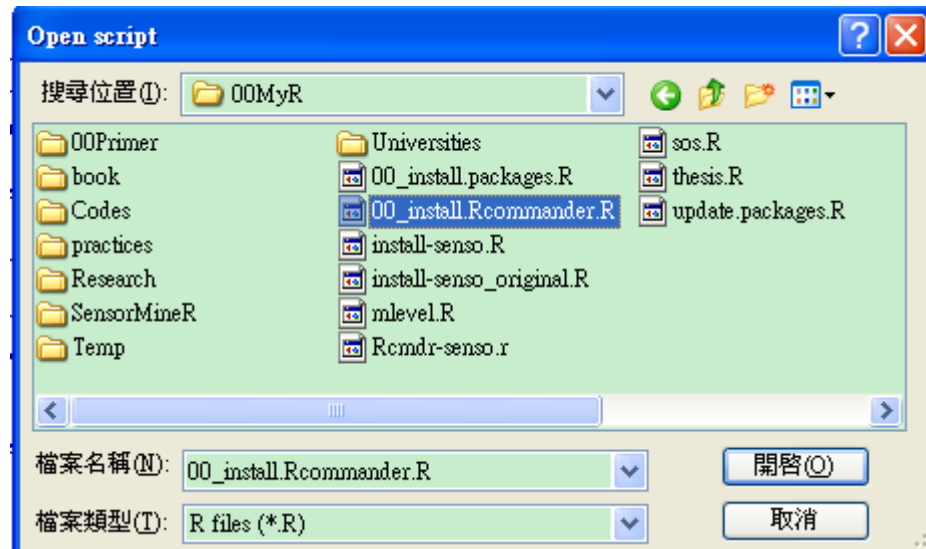
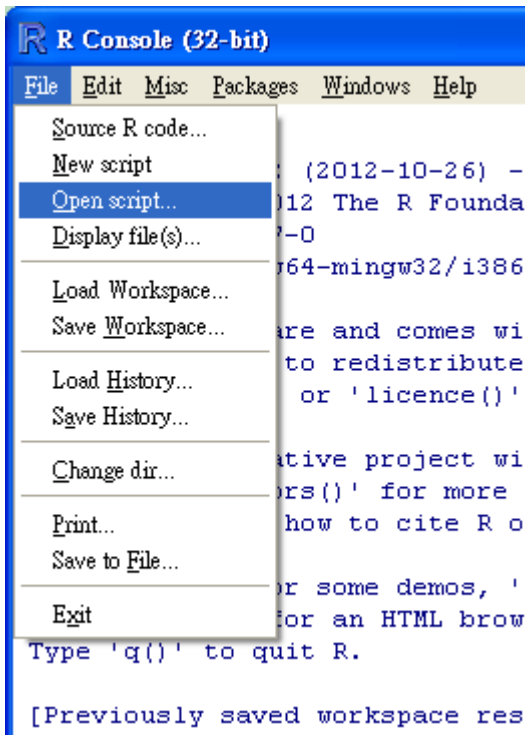
世新大學財務金融系

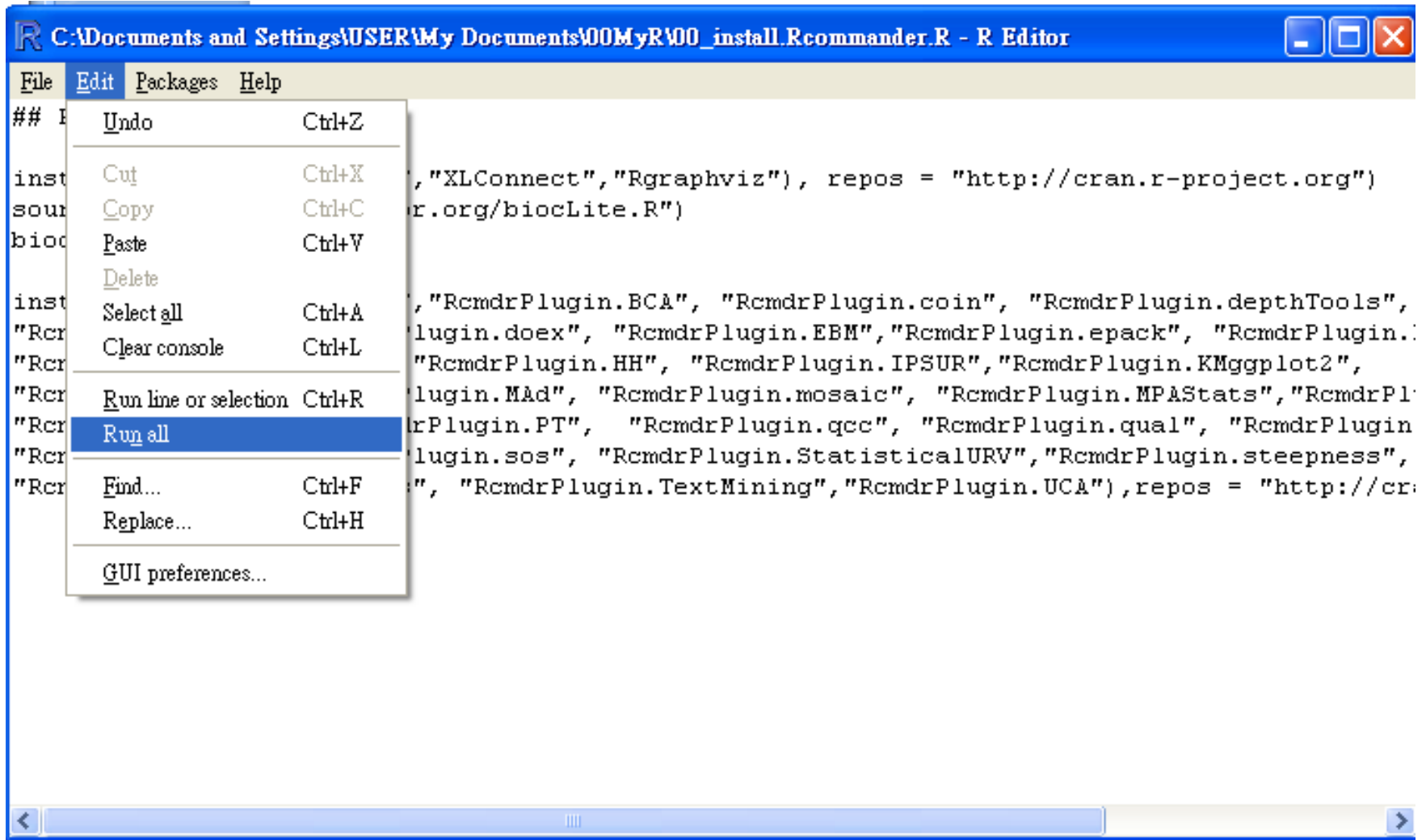
# Steps to Use R Commander

Given that R system is ready

# Step 1. Installation method 1

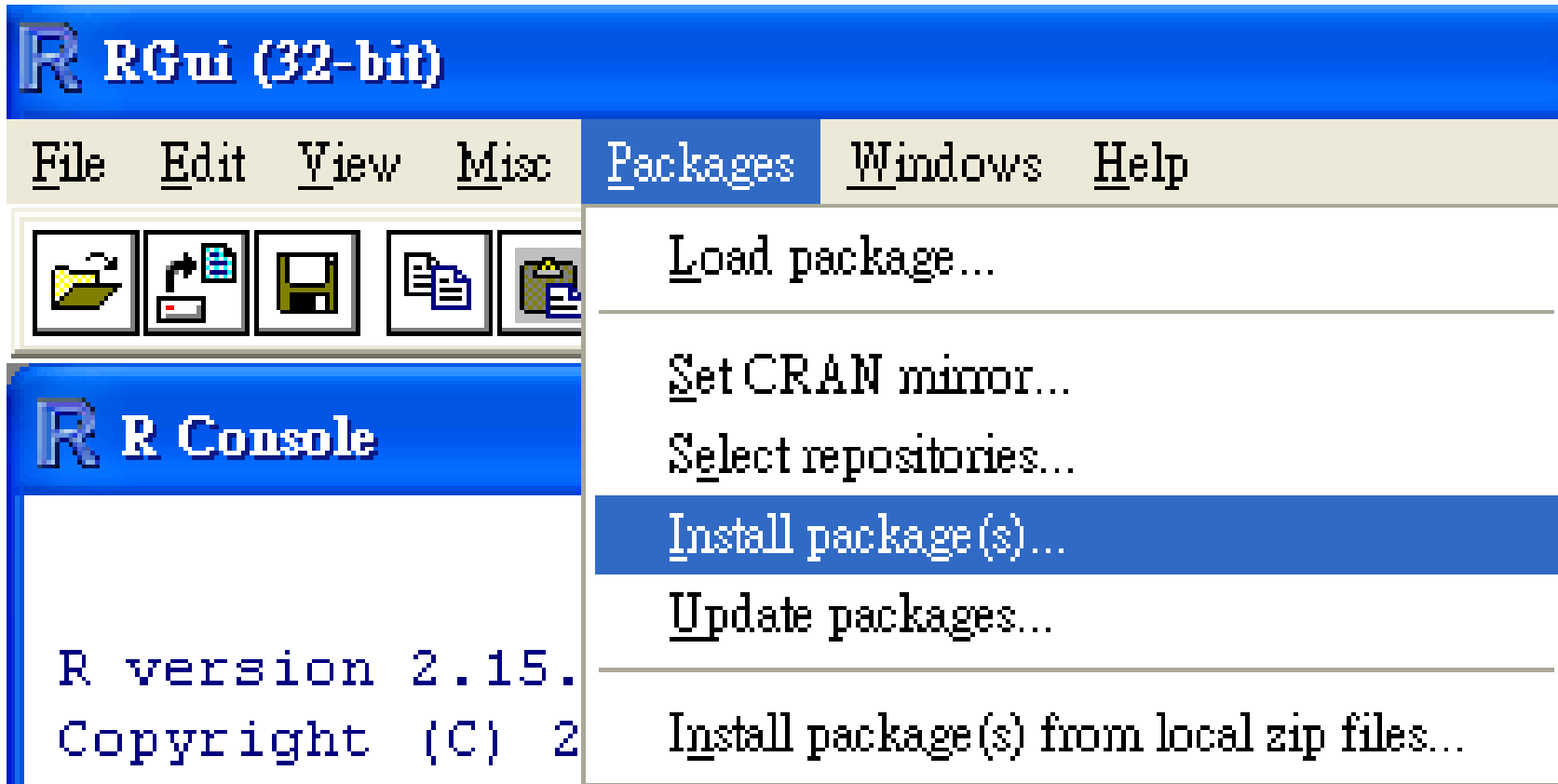
## 00\_install.Rcommander.R





It takes roughly 5 minutes to install all R-Commander components

# Installation method 2



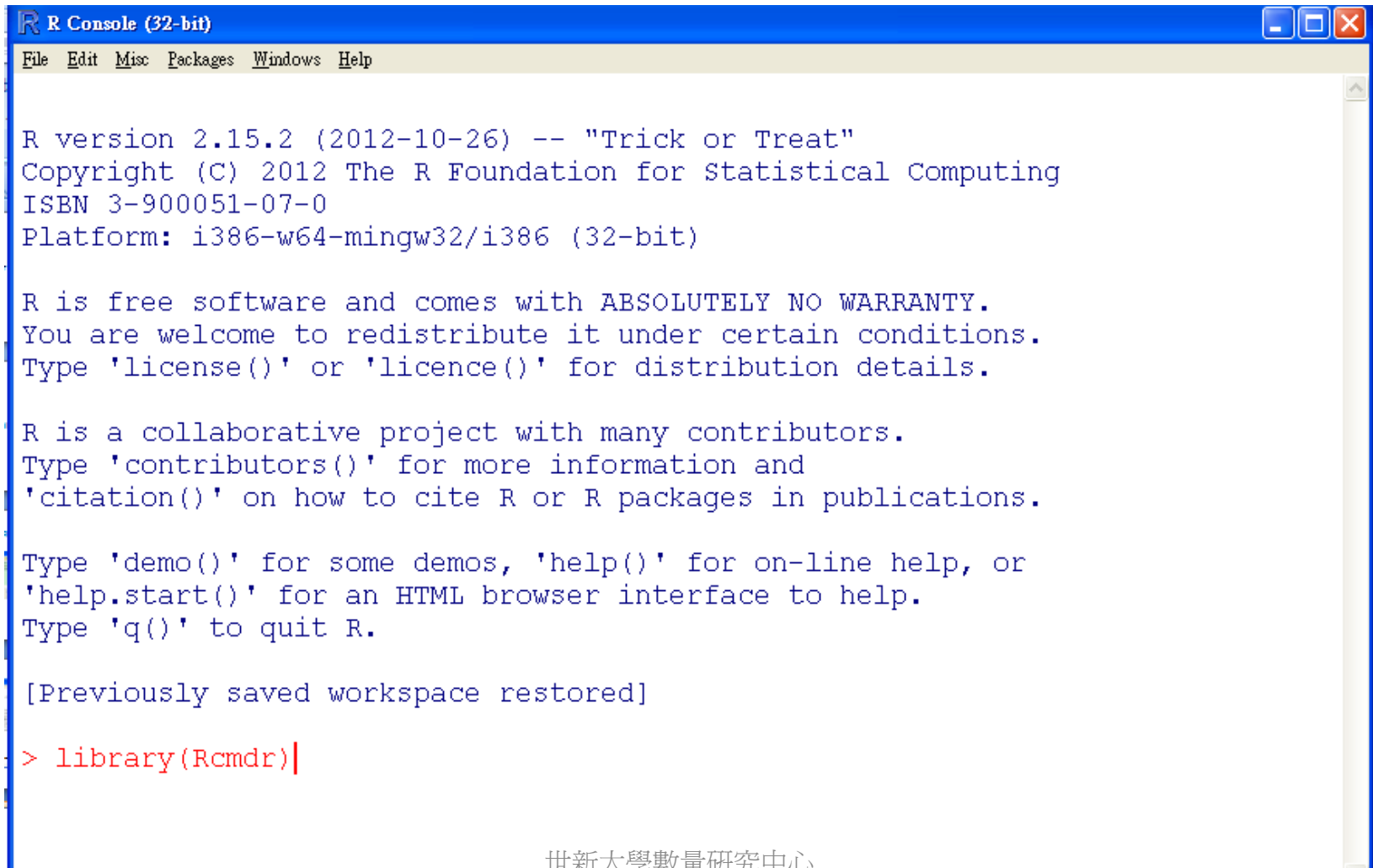
## CRAN mirror

India  
Indonesia  
Iran  
Ireland  
Italy (Milano)  
Italy (Padua)  
Italy (Palermo)  
Japan (Hyogo)  
Japan (Tsukuba)  
Japan (Tokyo)  
Korea (Seoul 1)  
Korea (Seoul 2)  
Latvia  
Mexico (Mexico City)  
Mexico (Texcoco)  
Netherlands (Amsterdam)  
Netherlands (Utrecht)  
New Zealand  
Norway  
Philippines  
Poland (Wroclaw)  
Russia  
Singapore  
Slovakia  
South Africa  
Spain (Madrid)  
Sweden  
Switzerland  
Taiwan (Taichung)  
Taiwan (Taipei)  
Thailand  
UK (Bristol)  
UK (London)  
UK (St Andrews)  
USA (CA 1)  
USA (CA 2)  
USA (IA)  
USA (IN)  
USA (KS)  
USA (MD)

## Packages

Rclusterpp  
Rcmdr  
RcmdrPlugin.BCA  
RcmdrPlugin.coin  
RcmdrPlugin.depthTools  
RcmdrPlugin.doBy  
RcmdrPlugin.DoE  
RcmdrPlugin.doex  
RcmdrPlugin.EACSPIR  
RcmdrPlugin.EBM  
RcmdrPlugin.epack  
RcmdrPlugin.Export  
RcmdrPlugin.FactoMineR  
RcmdrPlugin.HH  
RcmdrPlugin.IPSUR  
RcmdrPlugin.KMggplot2  
RcmdrPlugin.MAC  
RcmdrPlugin.MAD  
RcmdrPlugin.mosaic  
RcmdrPlugin.MPAStats  
RcmdrPlugin.orloca  
RcmdrPlugin.pointG  
RcmdrPlugin.PT  
RcmdrPlugin.qcc  
RcmdrPlugin.qual  
RcmdrPlugin.SCDA  
RcmdrPlugin.SLC  
RcmdrPlugin.sos  
RcmdrPlugin.StatisticalURV  
RcmdrPlugin.steeptess  
RcmdrPlugin.survival  
RcmdrPlugin.SurvivalT  
RcmdrPlugin.TeachingDemos  
RcmdrPlugin.TextMining  
RcmdrPlugin.UCA  
RColorBrewer  
rcom  
rconifers  
Rcpp  
RcppArmadillo

# Step 2. 啓動：在主控制台執行 `library(Rcmdr)`



```
R Console (32-bit)
File Edit Misc Packages Windows Help

R version 2.15.2 (2012-10-26) -- "Trick or Treat"
Copyright (C) 2012 The R Foundation for Statistical Computing
ISBN 3-900051-07-0
Platform: i386-w64-mingw32/i386 (32-bit)

R is free software and comes with ABSOLUTELY NO WARRANTY.
You are welcome to redistribute it under certain conditions.
Type 'license()' or 'licence()' for distribution details.

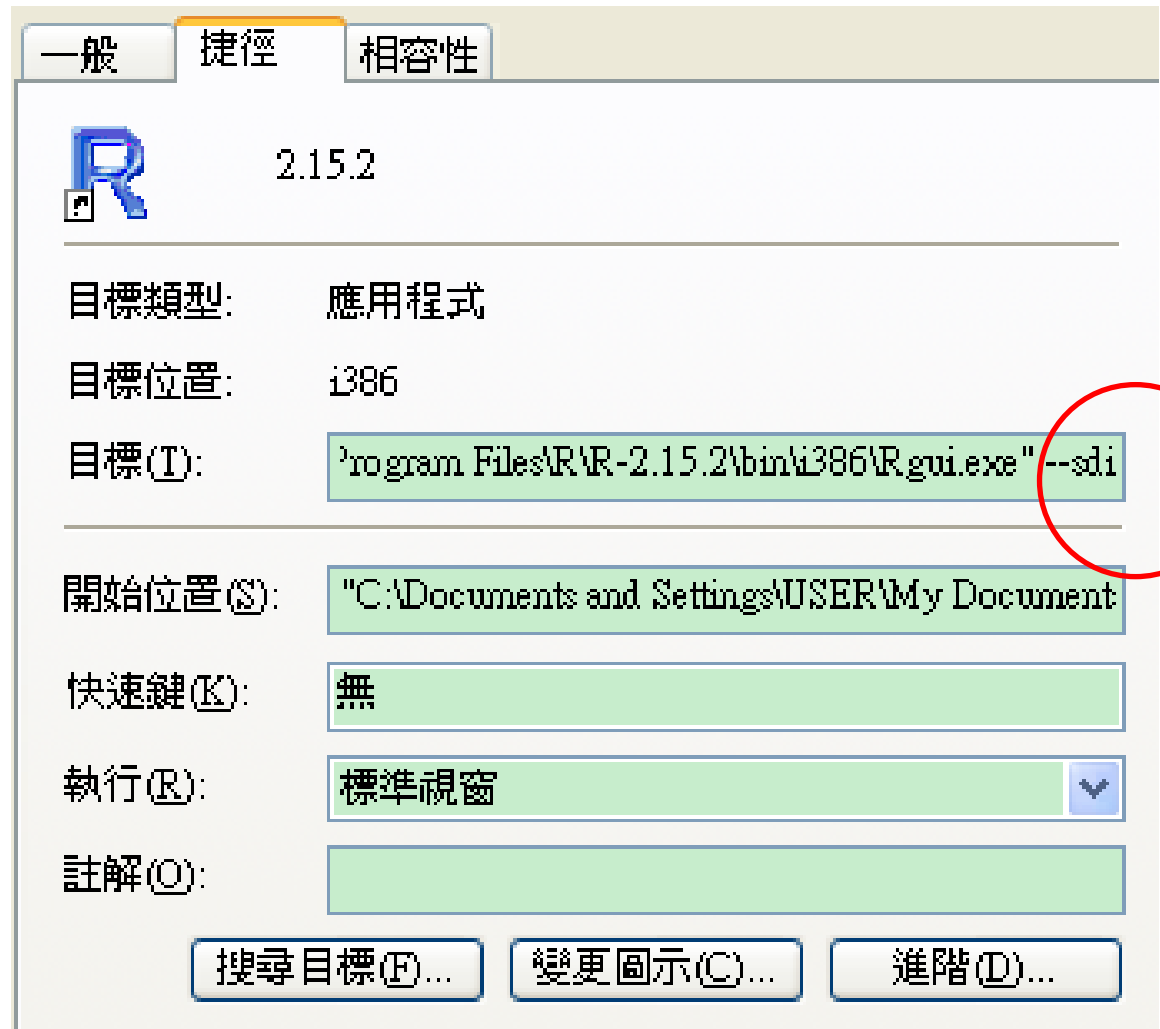
R is a collaborative project with many contributors.
Type 'contributors()' for more information and
'citation()' on how to cite R or R packages in publications.

Type 'demo()' for some demos, 'help()' for on-line help, or
'help.start()' for an HTML browser interface to help.
Type 'q()' to quit R.

[Previously saved workspace restored]

> library(Rcmdr)|
```

萬一你R的GUI介面是MDI，導致 Step 2 啟動失敗。  
→ 將R介面改成SDI

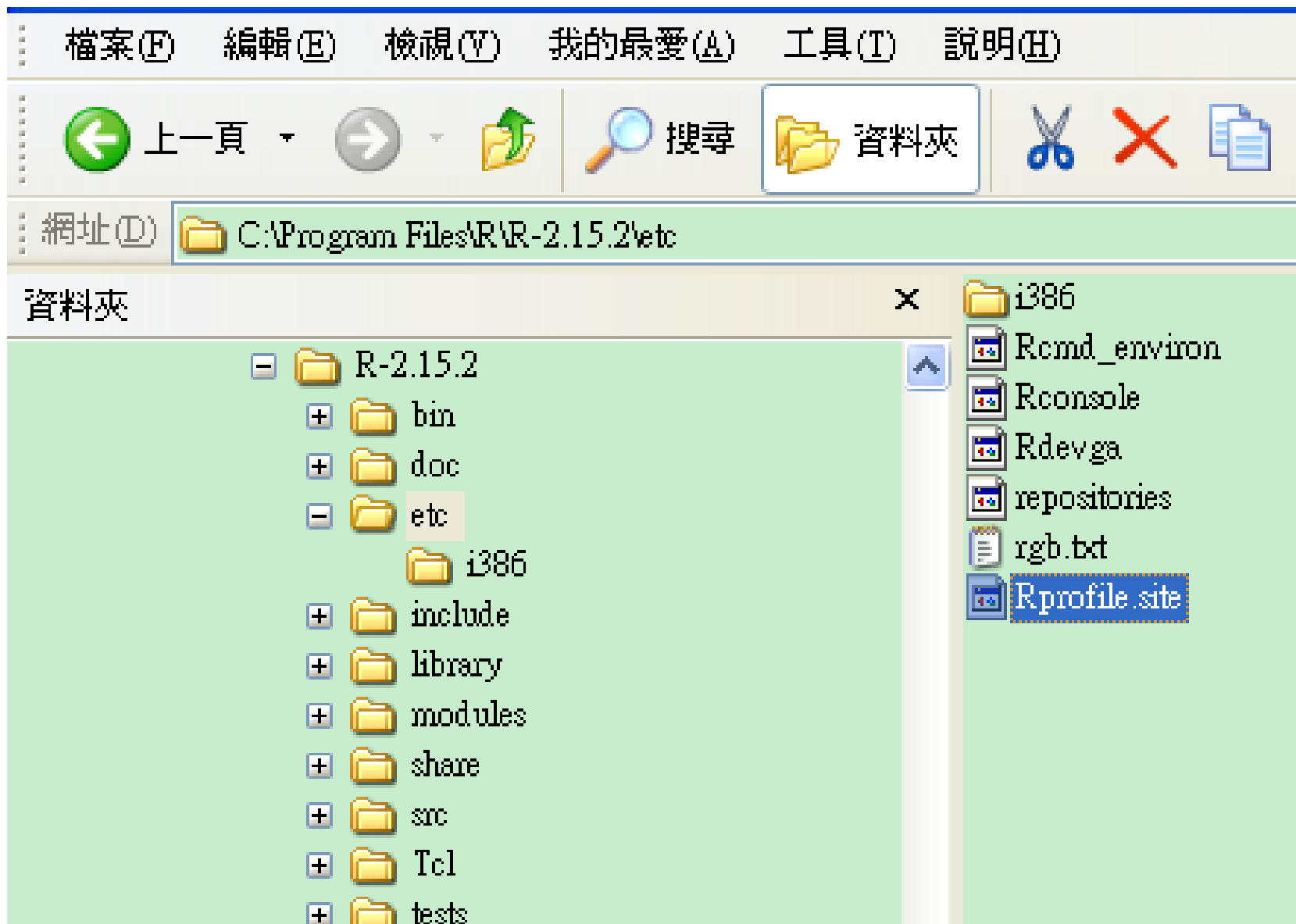




## Step 3. 如果想要一啓動 R，就直接進入 R Commander

C:\Program Files\R\R-2.15.2\etc 目錄內打開 Rprofile.site 檔案，將下行語法貼入即可

```
local({  
old <- getOption("defaultPackages")  
options(defaultPackages = c(old, "Rcmdr"))  
})
```



```
# Things you might want to change

# options(papersize="a4")
# options(editor="notepad")
# options(pager="internal")

# set the default help type
# options(help_type="text")
# options(help_type="html")

# set a site library
# .Library.site <- file.path(chartr("\\", "/", R.home()), "site-library")

# set a CRAN mirror
# local({r <- getOption("repos")
#       r["CRAN"] <- "http://my.local.cran"
#       options(repos=r)})

# Give a fortune cookie, but only to interactive sessions
# (This would need the fortunes package to be installed.)
# if (interactive())
#   fortunes::fortune()

local({
old <- getOption("defaultPackages")
options(defaultPackages = c(old, "Rcmdr"))
})
```

# Step 4. Demo Data

# Data\_RCommander.xls

The screenshot shows the R Commander application window. The title bar reads "R Commander". The menu bar includes "File", "Edit", "Data", "Statistics", "Graphs", "Models", "Distributions", "Tools", and "Help". Below the menu bar, there are two main sections: "Data set:" and "Model:". The "Data set:" section shows "<No active dataset>" and buttons for "Edit data set" and "View data set". The "Model:" section shows "<No active model>".

The interface is divided into three main windows:

- Script Window:** A large empty text area for writing R code.
- Output Window:** A large empty text area for displaying the results of R commands. A "Submit" button is located in the top right corner of this window.
- Messages:** A small window at the bottom left showing error messages:

```
[12] ERROR: 19)
[13] ERROR: 19)
```

At the bottom center of the window, the text "世新大學數量研究中心" (Shinshu University Quantitative Research Center) is displayed.

Appendix 1. 使用中不小心關掉  
Rcommander 欲再叫出時，在主  
控台，執行：**Commander()**