

# Deducer Introduction

世新大學財務金融系研究生

張晉嘉

Method I - 在R Console內執行安裝

# INSTALLATION

# Step 1. 請先下載[Install\\_Deducer.R](#) (點藍色字即連結至網頁)

1. R 官方網站: [The R Project of Statistical Computing](#)
2. 下載 [R-2.15.3-win.exe](#)。  
note. 某些 R 的財務 packages, 不支援最新版的系統。
3. [Installation and Basics, PDF](#)
4. [如何裝置套件\(packages\)?, PDF](#)
5. [如何將MDI改為SDI? \(download PDF\)](#)
6. [如何將主控台 R-Console 的顯示改成英文?](#)
7. [Frequently Used Packages](#)(常用模組, 此為 R 程式)
8. [一些資料與簡易程式](#)

1. 裝置 R Commander
2. [如何將被中文化的介面, 改回英文?](#)
3. 基礎分析: [迴歸、診斷、繪圖\(2D 和 3D\)](#)
4. 資料: [缺值編碼](#)
5. 插卡增益集(plug-ins): [統計教學 TeachingDemo](#)
6. 插卡增益集(plug-ins): [簡單時間序列 epack](#)  
(可做ARIMA配適、簡置GARCH、Filters、預測 etc.)
7. 多變量: [PCA/Factor Analysis, Cluster method](#)
8. [glm 模式迴歸分析](#)
9. [multinomial probit/logit model](#)
10. 將 urca 嵌入使用: [embedding urca \(readme.txt\)](#)  
(urca 是一個單根/共整的套件, 相當專業好用)

## 三、RExcel- 在Excel 內使用 R Commander 如何裝置 RExcel ?

方法一: [下載程式](#)。依照這個程式內的三步驟, 依序執行。完畢後, PC桌面會產生一個Excel增益集, 執行這個圖樣即可。

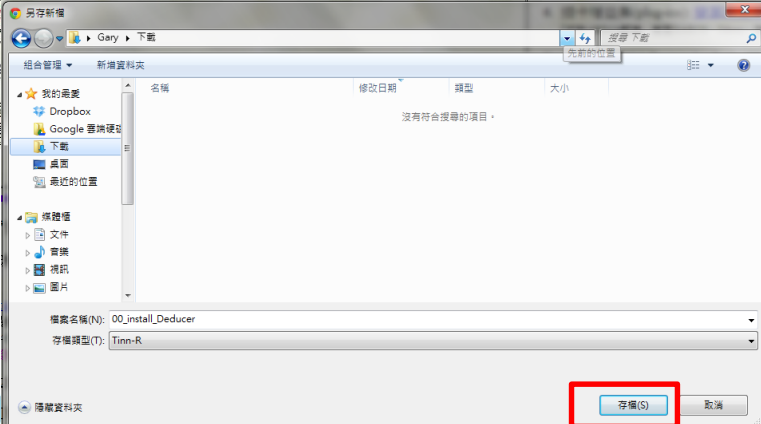
Note 1. RExcel 驅動的 R 系統, 多半不支援最新版。如果您是用最新版, 請嘗試在舊一點的 R 系統內 (如 2.15.\*), 執行 (方法一) 的程式。

方法二: 進入網站 [statConn](#) 下載 [statconnDCOM](#) 和 [RExcel](#) 兩個檔案, 分次執行即可。(or Local Server: [File1](#); [File2](#))

Note 2. 使用方法二, RExcel 會自動嵌入最新版的 R 系統, 偶爾會支援 RExcel。萬一 R 版本太新不被支援, 請切換 R 版本。步驟如下:

- (1) 進入: C
- (2) 執行程式

我們在非常稀  
如果以上兩個  
等, 這些問題



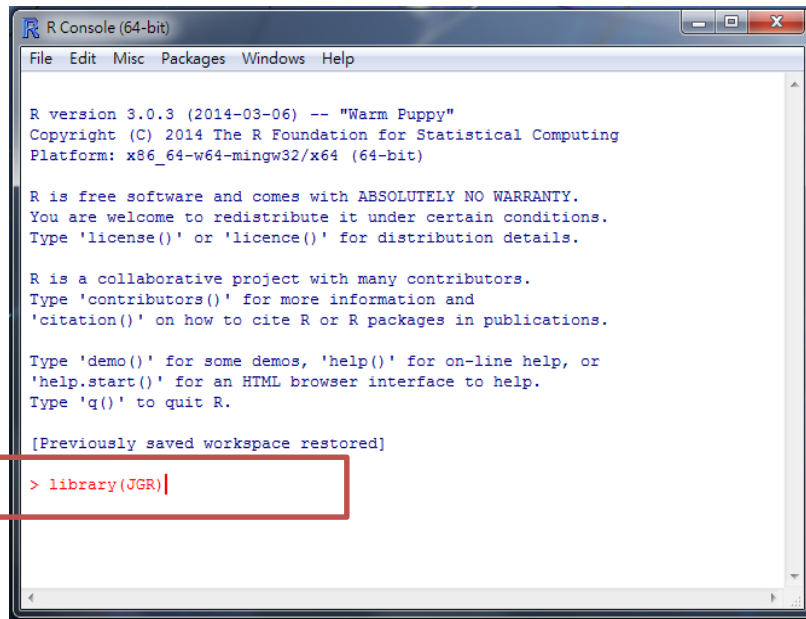
## 四、Deducer(官方網站: [Link](#))-- An excellent GUI for R, SPSS Killer

1. 請先[驗證 Java](#)是否為最新版, 若不是請下載並安裝最新版 [Java](#)
2. 安裝 Deducer: 請參閱 [Deducer Installation\(PDF\)](#)  
[下載裝置 Packages 程式](#)
3. 啟動: 任一方法執行完畢後, 在 R 主控台 Command Line 執行下面 2 行語法,  
`library(IJR)`  
`IJR()`
4. 若遇到無法啟動問題, 請參閱 [Deducer 執行錯誤問題集](#), 目前已可解決出現裝置錯誤的問題。

對 “下載程式/裝置 packages” 按  
右鍵 > 另存連結為



Step 3. 在Rconsole 輸入 **library(JGR)** 看是否有錯誤，若有錯誤請參閱數量中心網站的**Deducer執行錯誤問題集**。



```
R Console (64-bit)
File Edit Misc Packages Windows Help

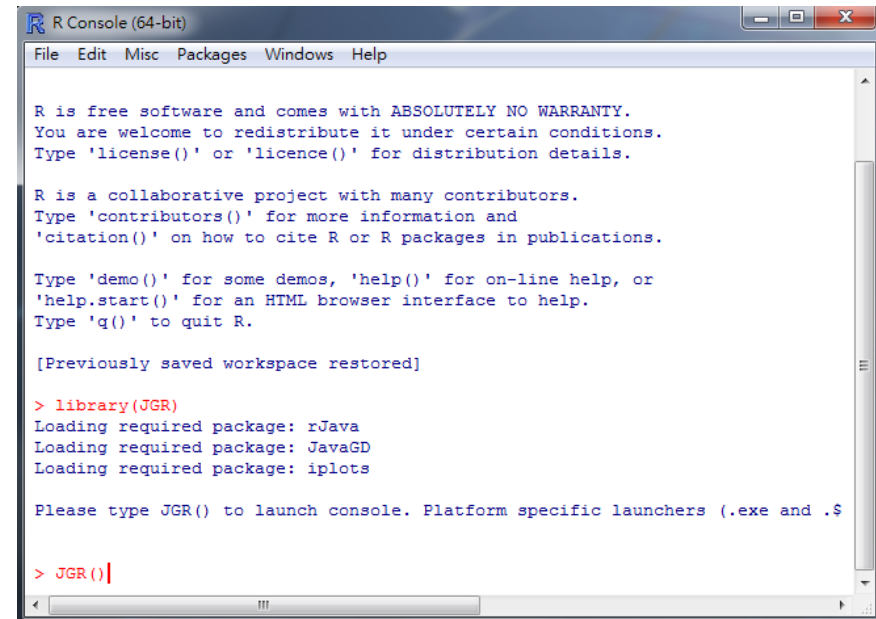
R version 3.0.3 (2014-03-06) -- "Warm Puppy"
Copyright (C) 2014 The R Foundation for Statistical Computing
Platform: x86_64-w64-mingw32/x64 (64-bit)

R is free software and comes with ABSOLUTELY NO WARRANTY.
You are welcome to redistribute it under certain conditions.
Type 'license()' or 'licence()' for distribution details.

R is a collaborative project with many contributors.
Type 'contributors()' for more information and
'citation()' on how to cite R or R packages in publications.

Type 'demo()' for some demos, 'help()' for on-line help, or
'help.start()' for an HTML browser interface to help.
Type 'q()' to quit R.

[Previously saved workspace restored]
> library(JGR)
```



```
R Console (64-bit)
File Edit Misc Packages Windows Help

R is free software and comes with ABSOLUTELY NO WARRANTY.
You are welcome to redistribute it under certain conditions.
Type 'license()' or 'licence()' for distribution details.

R is a collaborative project with many contributors.
Type 'contributors()' for more information and
'citation()' on how to cite R or R packages in publications.

Type 'demo()' for some demos, 'help()' for on-line help, or
'help.start()' for an HTML browser interface to help.
Type 'q()' to quit R.

[Previously saved workspace restored]
> library(JGR)
Loading required package: rJava
Loading required package: JavaGD
Loading required package: iplots

Please type JGR() to launch console. Platform specific launchers (.exe and .S

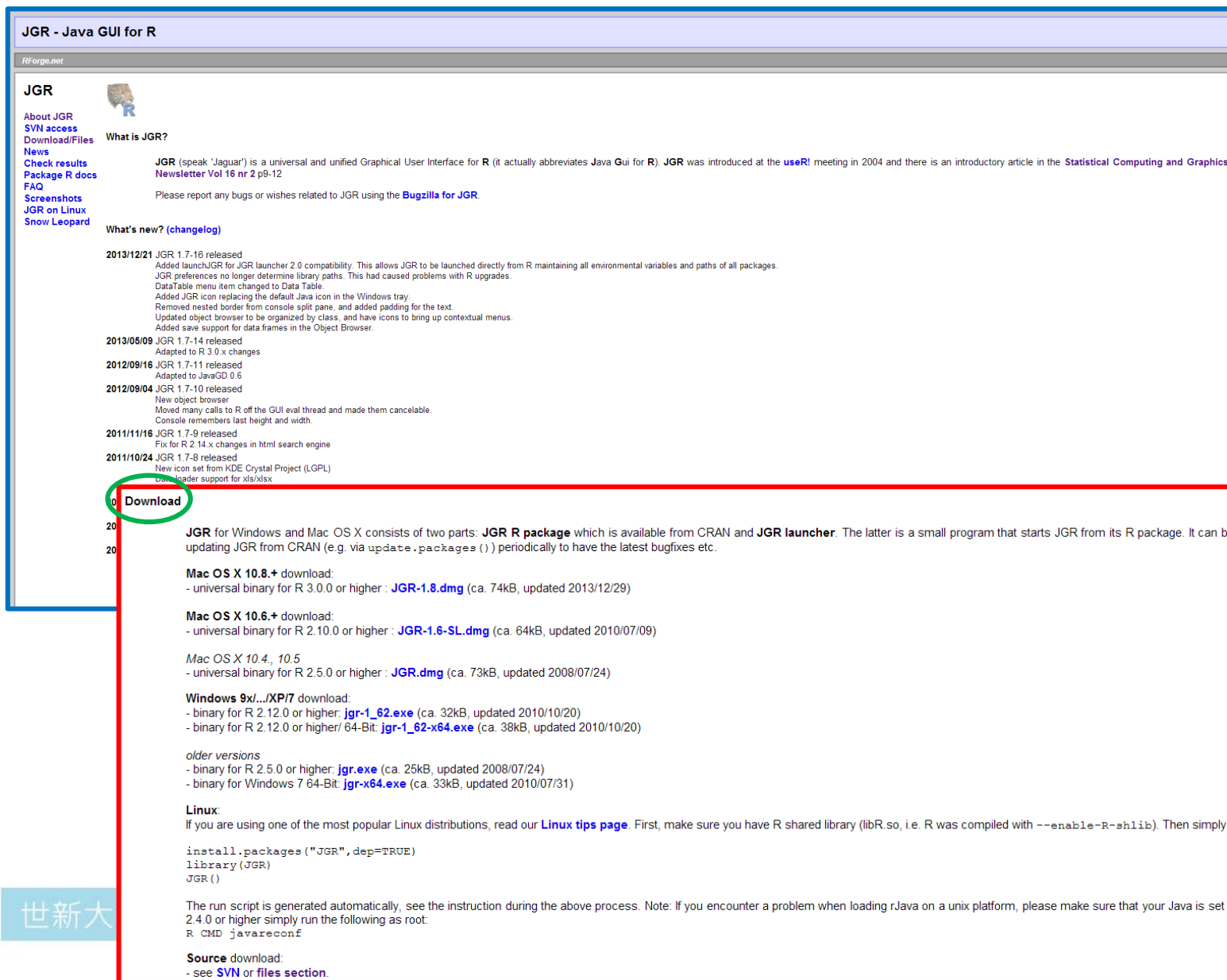
> JGR()
```

若沒出現問題再輸入 **JGR()** 就會跑出**Deducer**介面

Method II - Download **JGR**

# INSTALLATION

# Step 1. 連結到[JGR](#)網站(點藍色字即連結至網頁)並將網頁往下方拉將會看到Download(如圖綠框處)



The screenshot shows the JGR website interface. The top navigation bar includes links for 'About JGR', 'SVN access', 'Download/Files', 'News', 'Check results', 'Package R docs', 'FAQ', 'Screenshots', 'JGR on Linux', and 'Snow Leopard'. The main content area is titled 'What is JGR?' and contains a description of JGR as a universal GUI for R. Below this is a 'What's new? (changelog)' section with a list of updates from 2013/12/21 back to 2011/10/24. At the bottom of the page, a 'Download' link is circled in green, indicating the next step in the process.

Download

JGR for Windows and Mac OS X consists of two parts: **JGR R package** which is available from CRAN and **JGR launcher**. The latter is a small program that starts JGR from its R package. It can be also used to install all necessary packages. Consider updating JGR from CRAN (e.g. via `update.packages()`) periodically to have the latest bugfixes etc.

**Mac OS X 10.8.+ download:**  
- universal binary for R 3.0.0 or higher : **JGR-1.8.dmg** (ca. 74kB, updated 2013/12/29)

**Mac OS X 10.6.+ download:**  
- universal binary for R 2.10.0 or higher : **JGR-1.6-SL.dmg** (ca. 64kB, updated 2010/07/09)

**Mac OS X 10.4., 10.5**  
- universal binary for R 2.5.0 or higher : **JGR.dmg** (ca. 73kB, updated 2008/07/24)

**Windows 9x/.../XP/7 download:**  
- binary for R 2.12.0 or higher: **jgr-1\_62.exe** (ca. 32kB, updated 2010/10/20)  
- binary for R 2.12.0 or higher/ 64-Bit: **jgr-1\_62-x64.exe** (ca. 38kB, updated 2010/10/20)

**older versions**  
- binary for R 2.5.0 or higher: **jgr.exe** (ca. 25kB, updated 2008/07/24)  
- binary for Windows 7 64-Bit: **jgr-x64.exe** (ca. 33kB, updated 2010/07/31)

**Linux:**  
If you are using one of the most popular Linux distributions, read our [Linux tips page](#). First, make sure you have R shared library (libR.so, i.e. R was compiled with `--enable-R-shlib`). Then simply run in R (possibly as root for system-wide installation):

```
install.packages("JGR", dep=TRUE)
library(JGR)
JGR()
```

The run script is generated automatically, see the instruction during the above process. Note: If you encounter a problem when loading rJava on a unix platform, please make sure that your Java is set up properly and R is configured with Java support - in R 2.4.0 or higher simply run the following as root:  
R CMD javareconf

**Source download:**  
- see [SVN](#) or [files section](#).

# Step 2.點選屬於自己系統的版本下載並安裝。

**Download**

JGR for Windows and Mac OS X consists of two parts: **JGR R package** which is available from CRAN and **JGR launcher**. The latter is a small program that starts JGR from its R package. It can be also used to install all necessary packages. Consider updating JGR from CRAN (e.g. via `update.packages()`) periodically to have the latest bugfixes etc.

**Mac OS X 10.8.+ download:**  
- universal binary for R 3.0.0 or higher: **JGR-1.8.dmg** (ca. 74kB, updated 2013/12/29)

**Mac OS X 10.6.+ download:**  
- universal binary for R 2.10.0 or higher: **JGR-1.6-SL.dmg** (ca. 64kB, updated 2010/07/09)

Mac OS X 10.4., 10.5  
- universal binary for R 2.5.0 or higher: **JGR.dmg** (ca. 73kB, updated 2008/07/24)

**Windows 9x/.../XP/7 download:**  
- binary for R 2.12.0 or higher: **jgr-1\_62.exe** (ca. 32kB, updated 2010/10/20)  
- binary for R 2.12.0 or higher/ 64-Bit: **jgr-1\_62-x64.exe** (ca. 38kB, updated 2010/10/20)

*older versions*  
- binary for R 2.5.0 or higher: **jgr.exe** (ca. 25kB, updated 2008/07/24)  
- binary for Windows 7 64-Bit: **jgr-x64.exe** (ca. 33kB, updated 2010/07/31)

**Linux:**  
If you are using one of the most popular Linux distributions, read our [Linux tips page](#). First, make sure you have R shared library (libR.so, i.e. R was compiled with `--enable-R-shlib`). Then simply run in R (possibly as root for system-wide installation):

```
install.packages("JGR", dep=TRUE)
library(JGR)
JGR()
```

The run script is generated automatically, see the instruction during the above process. Note: If you encounter a problem when loading rJava on a unix platform, please make sure that your Java is set up properly and R is configured with Java support - in R 2.4.0 or higher simply run the following as root:  
R CMD javareconf

**Source download:**  
- see [SVN](#) or [files section](#).

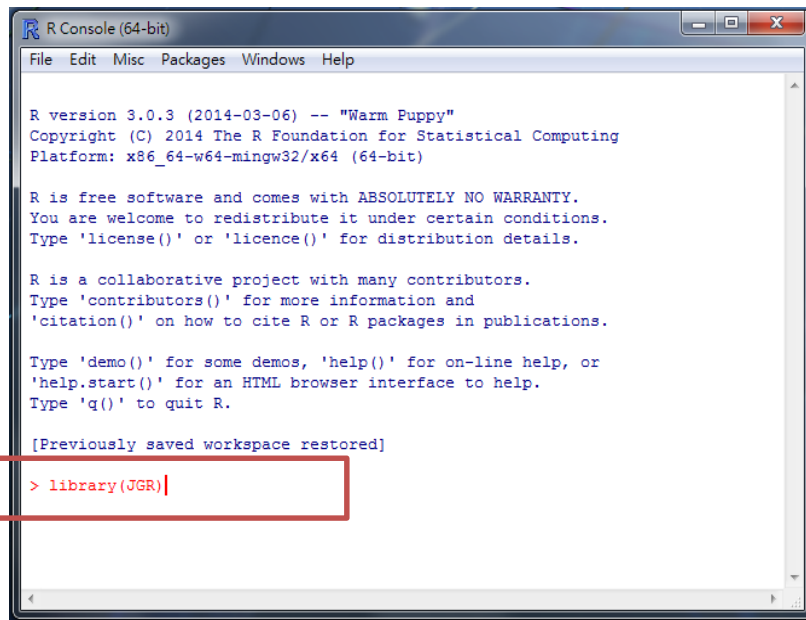
**Mac系統**

**Windows系統**

Jgr-1\_62.exe為32位元電腦  
Jgr-1\_62-x64.exe為64位元電腦



Step 3. 在Rconsole 輸入 **library(JGR)** 看是否有錯誤，若有錯誤請參閱數量中心網站的**Deducer執行錯誤問題集**。



```
R Console (64-bit)
File Edit Misc Packages Windows Help

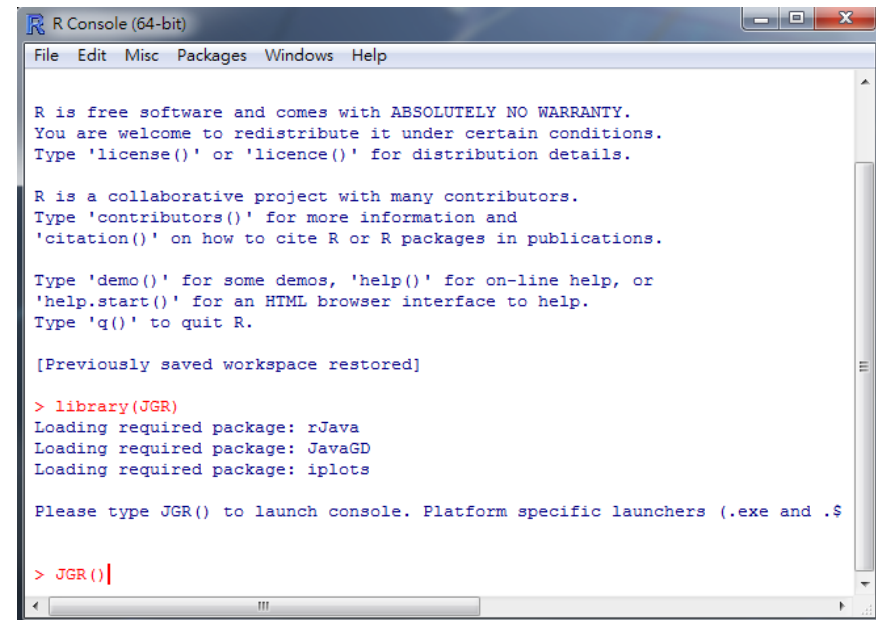
R version 3.0.3 (2014-03-06) -- "Warm Puppy"
Copyright (C) 2014 The R Foundation for Statistical Computing
Platform: x86_64-w64-mingw32/x64 (64-bit)

R is free software and comes with ABSOLUTELY NO WARRANTY.
You are welcome to redistribute it under certain conditions.
Type 'license()' or 'licence()' for distribution details.

R is a collaborative project with many contributors.
Type 'contributors()' for more information and
'citation()' on how to cite R or R packages in publications.

Type 'demo()' for some demos, 'help()' for on-line help, or
'help.start()' for an HTML browser interface to help.
Type 'q()' to quit R.

[Previously saved workspace restored]
> library(JGR)
```



```
R Console (64-bit)
File Edit Misc Packages Windows Help

R is free software and comes with ABSOLUTELY NO WARRANTY.
You are welcome to redistribute it under certain conditions.
Type 'license()' or 'licence()' for distribution details.

R is a collaborative project with many contributors.
Type 'contributors()' for more information and
'citation()' on how to cite R or R packages in publications.

Type 'demo()' for some demos, 'help()' for on-line help, or
'help.start()' for an HTML browser interface to help.
Type 'q()' to quit R.

[Previously saved workspace restored]
> library(JGR)
Loading required package: rJava
Loading required package: JavaGD
Loading required package: iplots

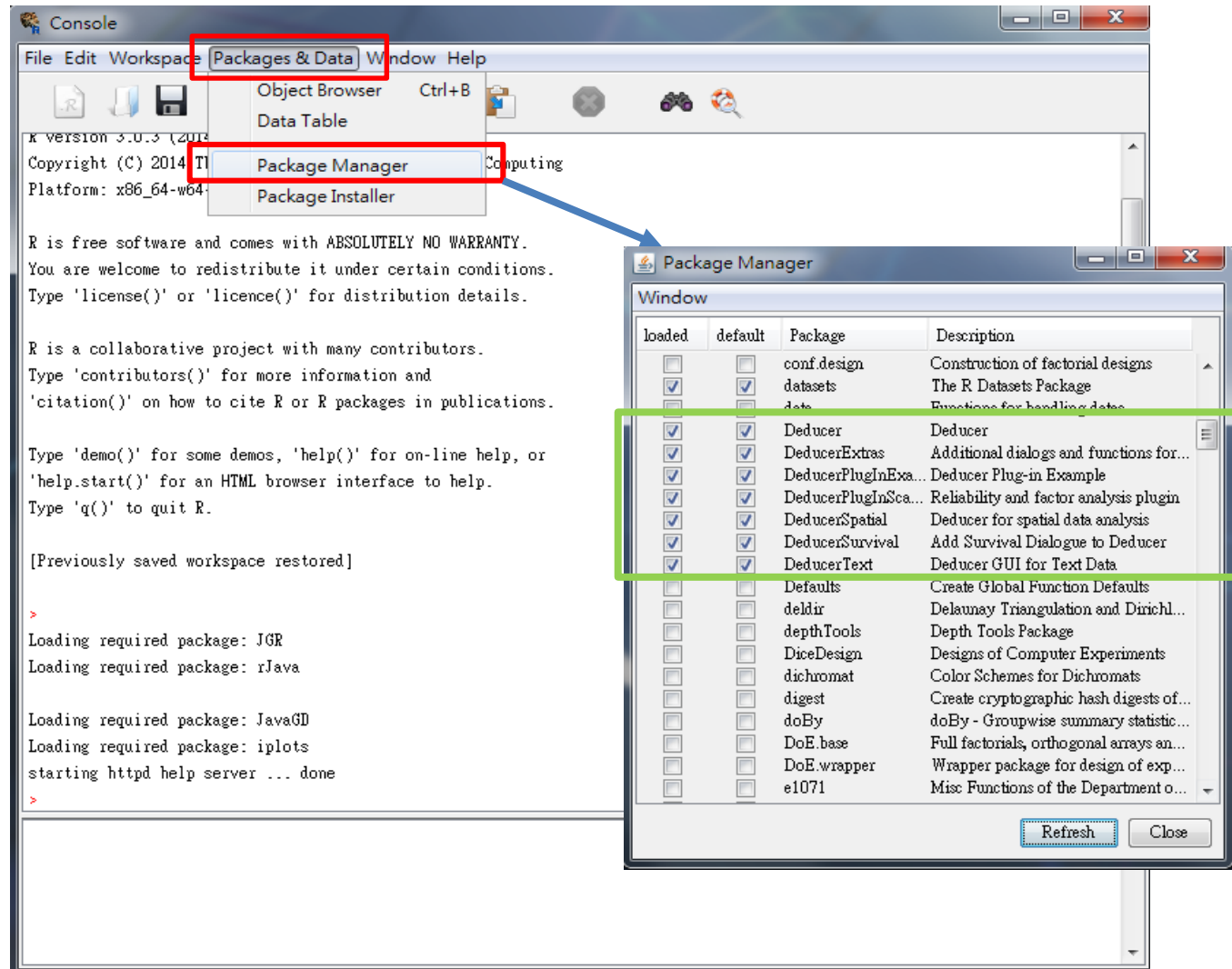
Please type JGR() to launch console. Platform specific launchers (.exe and .S

> JGR()
```

若沒出現問題再輸入 **JGR()** 就會跑出**Deducer**介面

# PACKAGE MANAGER

若已成功執行Deducer，請先更改套件管理。



將Deducer 開頭的套件都勾選default > Refresh